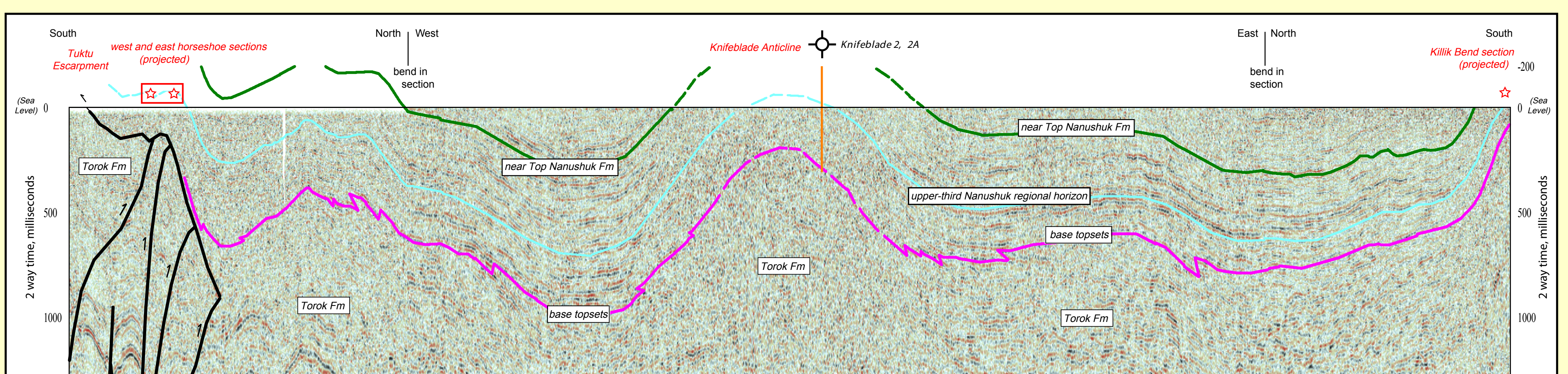
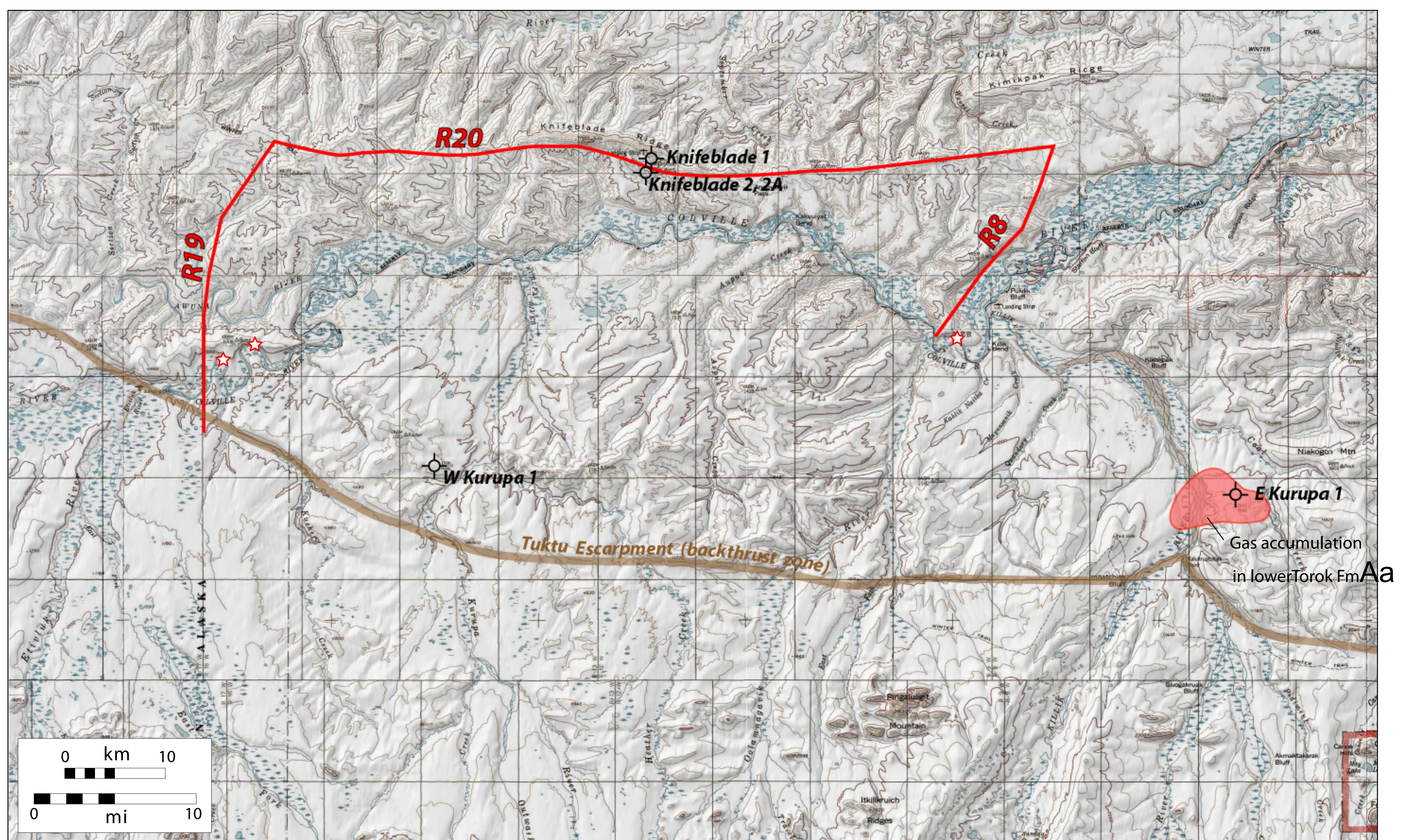
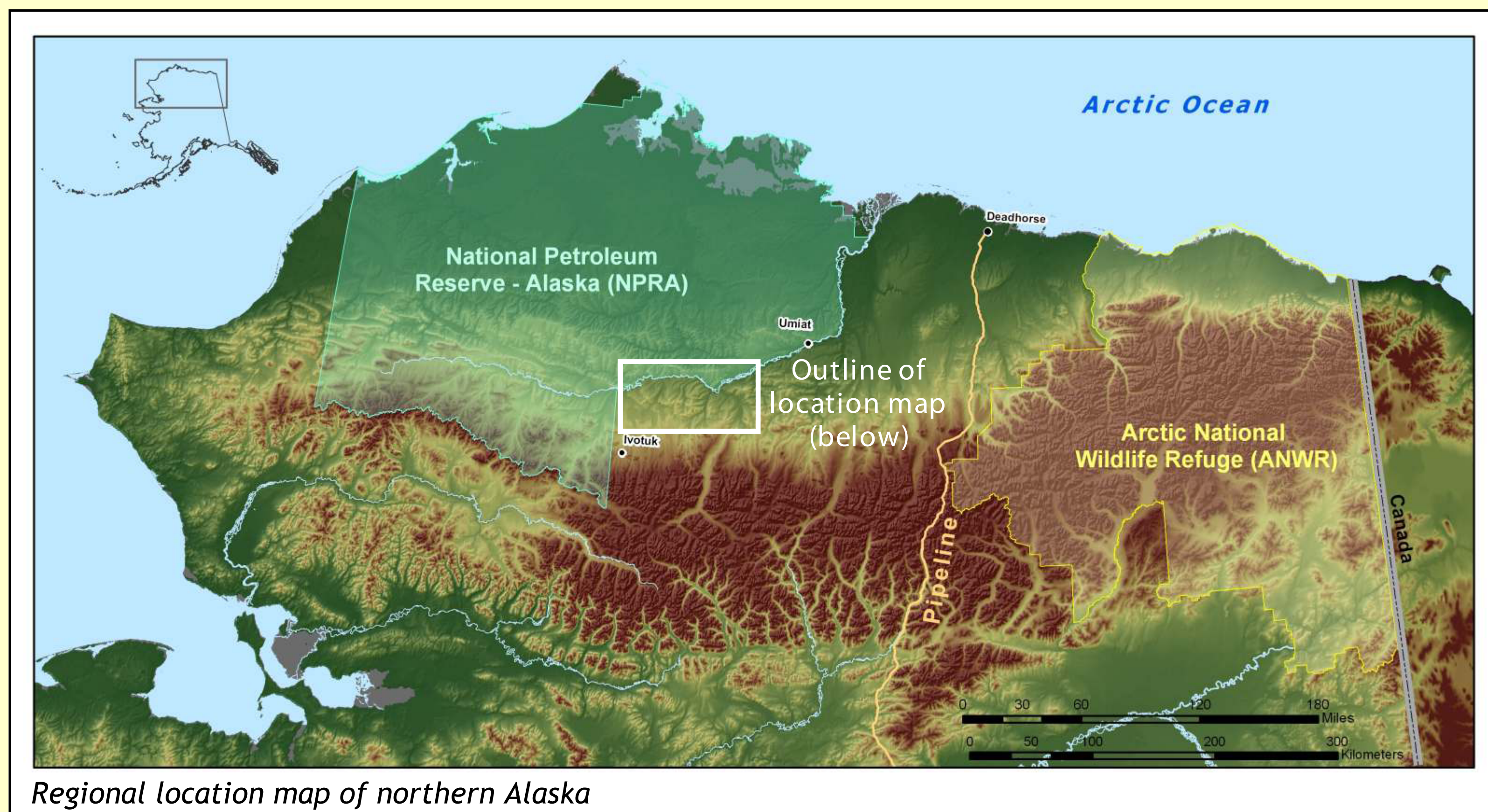


Regional Location and Seismic Constraints on Stratigraphic Position of Nanushuk Formation Measured Sections



*Miller, J.J., Agena, W.F., Lee, M.W., Zihlman, F.N., Grow, J.A., Taylor, D.J., Killgore, M., and Oliver, H.L., 2000. Regional seismic lines reprocessed using post-stack processing techniques: National Petroleum Reserve—Alaska: U.S. Geological Survey Open-File Report 00-286 (CD-ROM and <http://pubs.usgs.gov/of/2000/ofr-00-0286/22RLINES.HTM>).