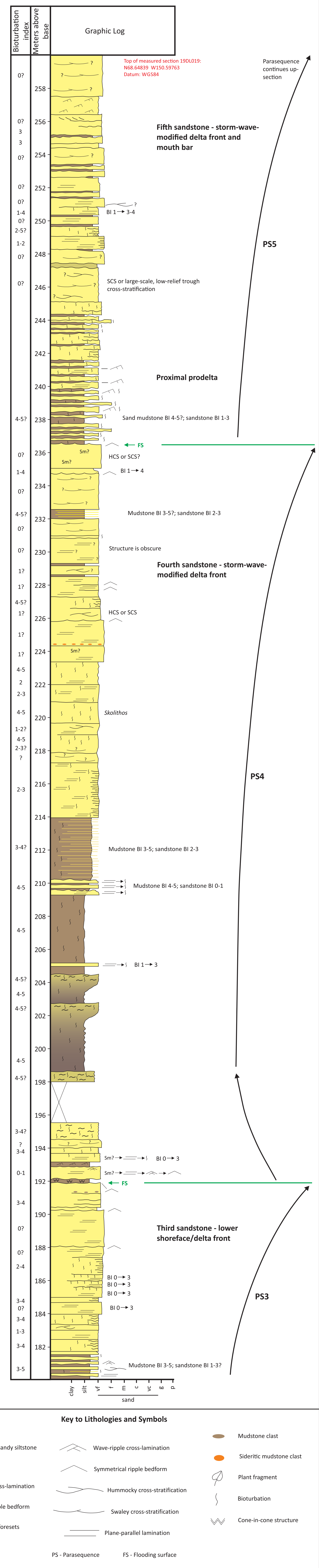
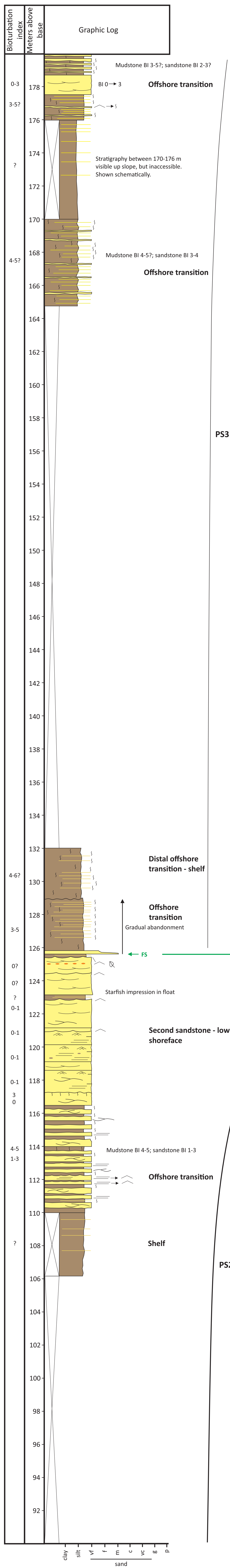
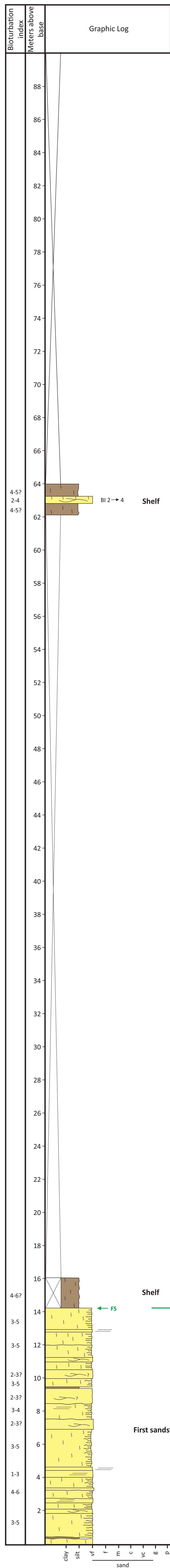


Measured Stratigraphic Section, Lower Nanushuk Formation (Albian), Arc Mountain Anticline, Nanushuk River, Alaska



Key to Lithologies and Symbols

	Sandstone		Wave-ripple cross-lamination		Mudstone clast
	Silty sandstone - sandy siltstone		Symmetrical ripple bedform		Sideritic mudstone clast
	Mudstone		Hummocky cross-stratification		Plant fragment
	Current ripple cross-lamination		Swaley cross-stratification		Bioturbation
	Asymmetrical ripple bedform		Plane-parallel lamination		Cone-in-cone structure
	Planar-tangential foresets				

PS - Parasequence FS - Flooding surface

Bioturbation Index (BI)

0 – no bioturbation; 1 – sparse bioturbation (1–5 percent bioturbated); 2 – low bioturbation (6–30 percent bioturbated); 3 – moderate bioturbation (31–60 percent bioturbated); 4 – high bioturbation (61–90 percent bioturbated); 5 – intense bioturbation (91–99 percent bioturbated, limited overprinting); 6 – complete bioturbation (100 percent bioturbated, repeated overprinting)

Bioturbation index modified from Taylor and Goldring (1993)

Section measured by D. LePain and N. Harun July 2019

